




The 4th China-CEEC Expo &
International Consumer Goods Fair

**Overseas Exhibitor
Business Travel Guide**


March 18, 2025





Contents

1. Hotels and Booking Service	1
2. Airport/Train Station Pickup Services	3
3. Shuttle Bus Service	3
4. Additional Transportation Service	3
5. SIM Card Registration	4
6. Currency Exchange	5
7. Business Visits	6
8. Appendix	6
Appendix 1: Hotel Information	7
Appendix 2: Travel Information Registration	12



1. Hotels and Booking Service

1.1 Hotel

No.	Hotel Name	Rating	Address/Phone Number	Traffic Information	Price
1	Nanyuan New City Hotel (Dongqian Lake Xiaoputuo Youngor Zoo Branch)	Four diamond	No.1 Mogao Road, Yinzhou District, Ningbo 0574-88113888	To the Ningbo International Conference Center: Approx 6.2 km by car, about 12 minutes To Ningbo Railway Station: Approx. 18 km by car, about 36 minutes To Lishe International Airport: Approx. 20 km by car, about 27 minutes	CNY 320/room/night (incl. breakfast)
2	Ningbo Novotel Hotel	Four diamond	No.18 Jianning Street, Yinzhou District, Ningbo 0574-27786666	To the Ningbo International Conference Center: Approx 14 km by car, about 27 minutes To Ningbo Railway Station: Approx. 9.8 km by car, about 29 minutes To Lishe International Airport: Approx. 21.1 km by car, about 33 minutes	CNY 420/room/night (incl. breakfast)
3	Ruby Bella Hotel Ningbo Old Bund	Four diamond	Building D, No. 85 Renmin Road, Jiangbei District, Ningbo 86-574-87039999	To the Ningbo International Conference Center: Approx 20 km by car, about 38 minutes To Ningbo Railway Station: Approx. 4 km by car, about 13 minutes To Lishe International Airport: Approx. 17 km by car, about 27 minutes	CNY 320/room/night (incl. breakfast)
4	Hilton Garden Inn Ningbo	Four diamond	No. 1099 Yinzhou Avenue, Yinzhou District, Ningbo 0574-28936666-3	To the Ningbo International Conference Center: Approx 13 km by car, about 19 minutes To Ningbo Railway Station: Approx. 9 km by car, about 20 minutes To Lishe International Airport: Approx. 9.5 km by car, about 25 minutes	CNY 450/room/night (incl. breakfast)
5	Landison Plaza Hotel Ningbo	Four diamond	No. 20, Lane 330, Xingning East Road, Yinzhou District, Ningbo 86-574-87071999	To the Ningbo International Conference Center: Approx 13 km by car, about 23 minutes To Ningbo Railway Station: Approx. 8.3 km by car, about 18 minutes To Lishe International Airport: Approx. 21 km by car, about 26 minutes	CNY 450/room/night (incl. breakfast)

1.2 HOTEL MAP

The 4th CHINA-CEEC EXPO & International Consumer Goods Fair Reception Hotel Distribution Map



Traffic Information

No.	Hotel Name	Distance to Ningbo International Conference Center	Distance to Ningbo Railway Station	Distance to Ningbo Lishe International Airport
①	Nanyuan New City Hotel	about 12min	about 36min	about 27min
②	Ningbo Novotel Hotel	about 27min	about 29min	about 33min
③	Ruby Bella Hotel Ningbo Old Bund	about 38min	about 13min	about 27min
④	Hilton Garden Inn Ningbo	about 19min	about 20min	about 25min
⑤	Landison Plaza Hotel Ningbo	about 23min	about 18min	about 26min

1.3 Booking Service

1.3.1 Payment:

Accommodation costs are borne by exhibitors.

Payment must be made within 3 days of room reservation. A confirmation will be provided within 3 days of receipt. Cancellations must be requested via email at least 15 business days before check-in.

1.3.2. Contact for Reservations:

Ms.Jiang Qiqin

Email: travelservice@cceexpo.org

Phone: +86-19906608885

2. Airport/Train Station Pickup Services

Complimentary transfer services are available for exhibitors. Please kindly provide arrival and departure details(Appendix 2) in advance. Transfers are arranged from Hangzhou Xiaoshan Airport, Shanghai Pudong Airport, Shanghai Hongqiao Airport, Ningbo Lishe Airport, and Ningbo Railway Station to your reserved hotel.

All vehicles will be accompanied by English-speaking staff.

3. Shuttle Bus Service During the Expo

3.1 Shuttle Bus Schedule

May 19-20: Shuttle buses arranged according to booth decoration and move-in needs.

May 22-25: Shuttle buses operate according to exhibition hours.

3.2 Shuttle Service Plan

Shuttle buses depart according to a fixed schedule.

Shuttles returning to the hotel will display the hotel name for easy identification.

Exhibitors who fail to board the shuttle on time will need to arrange their own transportation. The shuttle will depart punctually according to the scheduled departure time and will not wait for latecomers.

3.3 Driving Routes

Route 1:Nanyuan New City Hotel (Dongqian Lake Xiaoputuo Youngor Zoo Branch)
— International Conference Center

Route 2:Ningbo Novotel Hotel — Landison Plaza Hotel Ningbo — Hilton Garden Inn
Ningbo — International Conference Center

Route 3:Ruby Bella Hotel Ningbo Old Bund — International Conference Center

4. Additional Transportation Service

For any transportation needs beyond the provided services, please notify our staff via email in advance. Additional transportation costs will be borne by the exhibitor.

5. SIM Card Registration

SIM cards from telecom providers: China Mobile, China Unicom, and China Telecom.

Passport is required for registration.

Nearby Service Centers:

5.1 Near Nanyuan New City Hotel (Dongqian Lake Xiaoputuo Youngor Zoo Branch)

5.1.1 China Unicom (441m)

Address: No. 200, Mozhi North Road, Yinzhou District

Business Hours: 08:30-17:00

5.1.2 China Telecom (490m)

Address: No. 186, Mozhi North Road, Yinzhou District

Business Hours: Monday-Friday 08:30-17:00

5.2 Near Ningbo Novotel Hotel

5.2.1 China Mobile (2.1km)

Address: No. 2, Guanghua Road, Yinzhou District

Business Hours: Monday-Friday 08:30-17:30

5.2.2 China Unicom (2.4km)

Address: No. 88, Zhenxing Road, Yinzhou District

Business Hours: Monday-Friday 08:00-18:00

5.2.3 China Telecom (360m)

Address: No. 556, Ningdong Road, Yinzhou District

Business Hours: Monday-Friday 08:30-17:30

5.3 Near Ruby Bella Hotel Ningbo Old Bund

5.3.1 China Mobile (617m)

Address: North District, Shuguang Community, Jiangdong North Road, Yinzhou District

5.3.2 China Unicom (896m)

Address: No. 32-2, Xinma Road, Jiangbei District

Business Hours: Monday-Friday 08:00-18:00

5.3.3 China Telecom (629m)

Address: 1st Floor, Telecom Complex Building, No. 96, Heyi Road, Gulou Street, Haishu District

Business Hours: Monday-Friday 08:30-17:30

5.4 Near Hilton Garden Inn Ningbo

5.4.1 China Mobile (950m)

Address: Room 305, Guangbo Lijing Center, No. 252, Tianda Alley, Yinzhou District

Business Hours: Monday-Friday 08:30-17:30

5.4.2 China Unicom (476m)

Address: About 140m north of Yinzhou Passenger Transport Terminal, Yinzhou Avenue, Yinzhou District

Business Hours: Monday-Friday 08:00-17:00

5.4.3 China Telecom (289m)

Address: No. 11, Rong'an Xingkong Tiandi Plaza, Tiantong South Road, Shouan Street, Yinzhou District

Business Hours: Monday-Friday 09:00-21:00

5.5 Near Landison Plaza Hotel Ningbo

5.5.1 China Mobile (566m)

Address: F2, Lechenghui, No. 525, Yiyuan Road, Yinzhou District

5.5.2 China Unicom (2.4km)

Address: No. 88, Zhenxing Road, Yinzhou District

Business Hours: Monday-Friday 08:00-18:00

5.5.3 China Telecom (640m)

Address: No. 267, Qingrun Street, Yinzhou District

Business Hours: Monday-Friday 09:00-17:00

6. Currency Exchange

6.1 Pre-exchange Services

Currency exchange (USD only) is available via pre-booking. Exchange rates are based on daily market rates and a service fee applies. Pre-exchanged cash can be collected at the hotel reception upon arrival in Ningbo.

6.2 Airport Exchange Services

6.2.1 Ningbo Lishe International Airport

Manual Counter (7:00-21:00)

Address: T2, International, Hong Kong, Macau, Taiwan Arrivals, 3rd Floor, near Gate 27, Ningbo Lishe International Airport. Only foreign currency cash can be exchanged for RMB cash. VISA cards cannot be used. The exchange limit for each foreigner is US\$5,000 (inclusive) on the same day.

ATM(24 hours)

Address: T2, International/Hong Kong, Macau, Taiwan Arrivals, 1st Floor, near Gate 26, Ningbo Lishe International Airport.

6.2.2 Shanghai Pudong International Airport

T1 Service Locations (07:00-19:30):

SPD Bank: Between Gates 10-11 in the Arrival Hall

Bank of China: Between Gates 8-9 in the Departure Hall

T2 Service Locations (06:30-23:00):

SPD Bank: Behind Island D in the Departure Hall

6.2.3 Shanghai Hongqiao International Airport

T1 :Near Baggage Claim Area No. 04 in the International, Hong Kong, Macau, and Taiwan Arrival Area,West Side of the Arrival Reception Area,Near Boarding Gates T11 and T14 in the International Departure Area.

T2:North Side of the Check-in Area on the 3rd Floor,South and North Areas within the Arrival Restricted Zone.

6.2.4 Hangzhou Xiaoshan International Airport

Offers currency exchange services for RMB, USD, HKD, GBP, JPY, EUR, and 20 other currencies.

Terminal A:

Location 1: Near Boarding Gate A02 in the Departure Restricted Area, opposite the Duty-Free Tobacco and Alcohol Store

Business Hours: 08:00-23:00

Contact: +86-571-86660580

Location 2: Opposite Gate 2 in the Arrival Hall, next to the FamilyMart convenience store

Business Hours: 08:00-23:00

Contact: +86-571-87663395

Terminal B:

Near Gate 12 in the Arrival Hall, diagonally opposite the Lost & Found counter

Business Hours: 09:00-22:00

Contact: +86-571-82912250

7. Business Visits

If exhibitors request for visits that are not arranged by the organizing committee, we will be happy to recommend suitable routes and provide appropriate assistance services, but the costs incurred will be borne by themselves.

Appendix:

1. Hotel Information
2. Travel Information Registration

Appendix 1

Hotel Information

1. Nanyuan New City Hotel (Dongqian Lake Xiaoputuo Youngor Zoo)/Four diamond

Address/Phone Number: No.1, Mogao Road, Yinzhou District, Ningbo/+86-0574-88113888

Traffic Information:

To the Ningbo International Conference Center: Approx 6.2 km by car, about 12 minutes

To Ningbo Railway Station: Approx. 18 km by car, about 36 minutes

To Lishe International Airport: Approx. 20 km by car, about 27 minutes

Introduction:

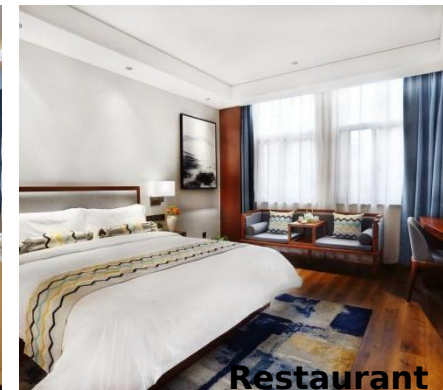
The hotel is close to the major attractions of Dongqian Lake, convenient for traveling. The hotel has a Chinese restaurant with Ningbo local dishes, equipped with 7 private rooms of different styles and can be connected, and complete supporting facilities for meetings and banquets, which can provide you with a pleasant and comfortable experience no matter it is a small gathering of family and friends or business negotiation. The hotel provides consulting service for Dongqian Lake special travel routes, and at the same time, the hotel is equipped with ground and underground parking lots with sufficient parking spaces.



Hotel appearance



Lobby



Restaurant

2.Ningbo Novotel Hotel/Four diamond

Address/Phone Number: No. 18 Jianning Street, Yinzhou District, Ningbo, 0574-27786666

Traffic Information:

To the Ningbo International Conference Center: Approx. 14 km by car, about 27 minutes

To Ningbo Railway Station: Approx. 9.8 km by car, about 29 minutes

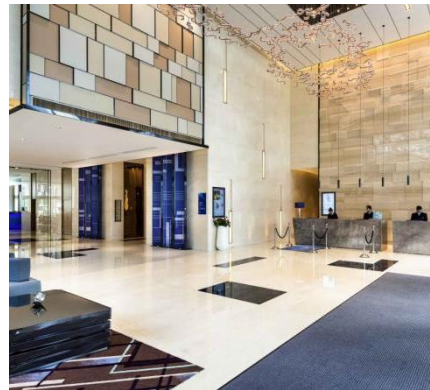
To Lishe International Airport: Approx. 21.1 km by car, about 33 minutes

Hotel introduction :

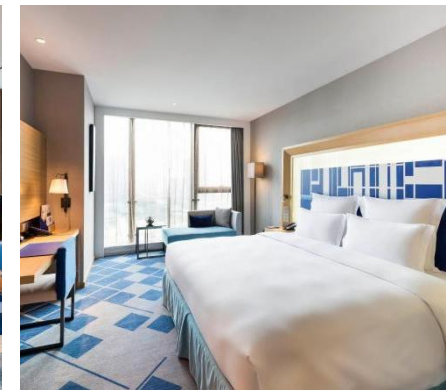
The hotel is located in Ningbo Eastern New Town, at the intersection of Ningchuan Road and Haiyan North Road, right next to Haiyan North Road Station (Exit A) on Metro Line 1. It is also close to Ningbo Hankyu, Ningbo Cultural Plaza, Hongtai Plaza, and Ningbo International Convention and Exhibition Center. Most of the hotel's public areas feature floor-to-ceiling windows, allowing natural light to fill the space and offering a glimpse of the youthful and modern vibe of Ningbo Eastern New Town.



Hotel Appearance



Lobby



Restaurant

3.Ruby Bella Hotel Ningbo Old Bund / Four diamond

Address / Phone Number: D Building, No. 85, Renmin Road, Jiangbei District, Ningbo, 0574-87039999

Traffic information:

To the Ningbo International Conference Center: Approx 20 km by car, about 38 minutes

To Ningbo Railway Station: Approx. 4 km by car, about 13 minutes

To Lishe International Airport: Approx. 17 km by car, about 27 minutes

Hotel Introduction:

The hotel is surrounded by the charm of the classical building and is located in the core area of Ningbo's Sanjiangkou and Old Bund. The hotel offers a variety of room types, each with a retro flavor, featuring European-style murals, brass lighting, and old-time antiques in the surrounding decor. Equipped with Marshall speakers, the hotel provides an exclusive music space for guests, offering a more thoughtful and detailed stay experience.



Hotel Appearance



Lobby



Restaurant



4.Hilton Garden Inn Ningbo/Four diamond

Address/Phone Number: No. 1099 Yinzhou Avenue, Yinzhou District, Ningbo, 0574-28936666-3

Traffic Information:

To the Ningbo International Conference Center: Approx 13 km by car, about 19 minutes

To Ningbo Railway Station: Approx. 9 km by car, about 20 minutes

To Lishe International Airport: Approx. 9.5 km by car, about 25 minutes

Hotel Introduction:

All rooms at Hilton Garden Inn Ningbo are equipped with a 43-inch LCD TV, floor-to-ceiling panoramic windows, adjustable lighting, a comfortable desk, and an ergonomic chair. High-speed internet is available throughout the hotel, and the 24-hour business center allows for remote printing directly from your room, making guests' work more efficient.



Hotel Appearance



Lobby



Restaurant



5.Landison Plaza Hotel Ningbo / Four diamond

Address/Phone Number:No.20, Lane 330, Xingning East Road, Yinzhou District, Ningbo, 0574-87071999

Traffic Information:

To the Ningbo International Conference Center: Approx 13 km by car, about 23 minutes

To Ningbo Railway Station: Approx. 8.3 km by car, about 18 minutes

To Lishe International Airport: Approx. 21 km by car, about 26 minutes

Hotel Introduction:

The hotel is located in a prime business district in Ningbo East New City, with convenient transportation. The hotel offers a variety of rooms, 6 luxurious dining suites, and 4 high-standard meeting rooms, including a nearly 700 square meter pillar-free banquet hall. The hotel is equipped with various modern service facilities and high-end entertainment amenities, which can meet a wide range of customer needs.



Hotel Appearance



Lobby



Restaurant



